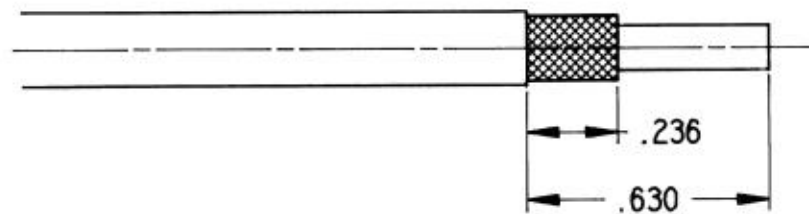
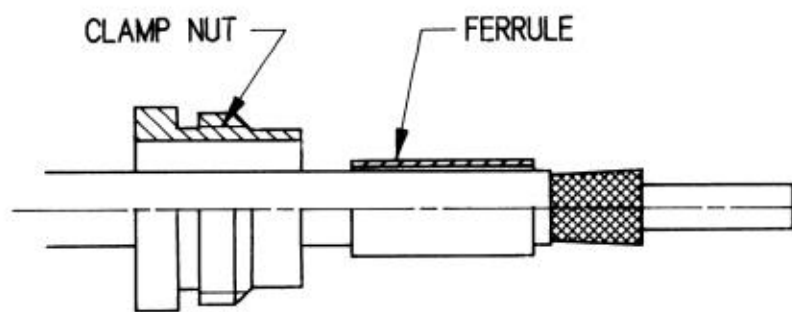




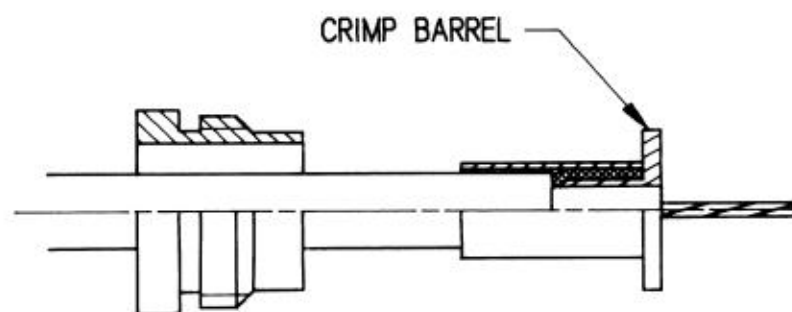
TITLE : T-CAS \_ SIZE 1 RF CONTACT \_ WIRING INSTRUCTIONS  
FOR ASN-E 0293 XF , RG 400 , RG 142 , ECS 3C142B , ECS 311601  
TIMES AA 6343 AND TIMES AA 5888<sup>1</sup> CABLE



STEP 1  
STRIP CABLE JACKET TO DIMENSIONS SHOWN



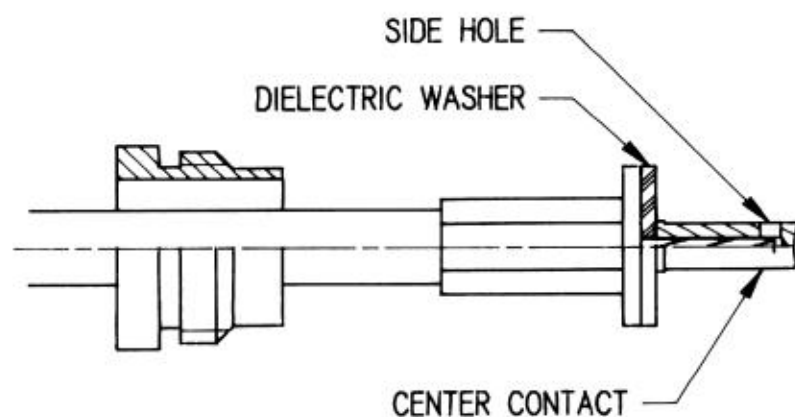
STEP 2  
SLIDE NUT AND FERRULE OVER THE CABLE  
FLARE THE BRAID



STEP 3  
SLIDE CRIMP BARREL OVER DIELECTRIC AND PLACE BRAID ON KNURLED AREA  
SLIDE FERRULE OVER BRAID  
CRIMP FERRULE USING:

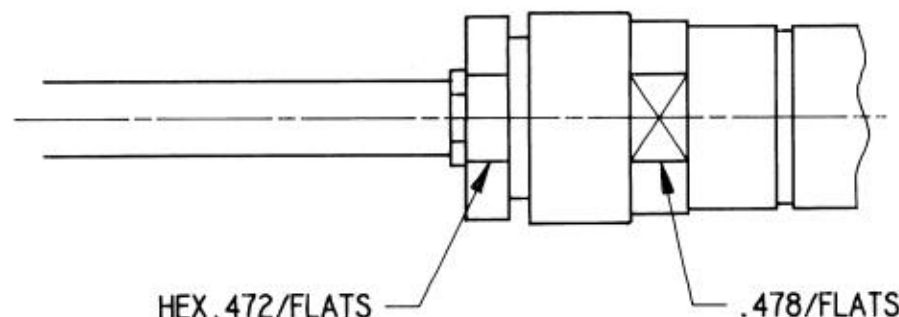
CABLE	CRIMPING TOOL	DIE
RG 142	M22520/5-01	M22520/5-05 HEX A OR M22520/5-45 HEX B
TIMES AA 6343		
ECS 3C142B		
RG 400		
ASN-E 0293 XF		
TIMES AA5888		
ECS 311601	M22520/5-13 HEX A	

THEN TRIM DIELECTRIC



STEP 4  
SLIDE DIELECTRIC WASHER OVER CENTER CONDUCTOR  
THEN CENTER CONTACT. CRIMP CENTER CONTACT USING:

CABLE	CRIMPING TOOL/SELECTOR	POSITIONER/TURRET
RG 142	M22520/1-01 SEL 7	M22520/1-13 GREEN
TIMES AA 6343		
ECS 3C142 B		
RG 400	M22520/1-01 SEL 8	M22520/1-13 GREEN
ASN-E 0293 XF		
TIMES AA5888		
ECS 311301		



STEP 5  
INTRODUCE THE CABLE INTO THE OUTER CONTACT  
SCREW AND TIGHTEN THE CLAMP NUT WITH  
10-15 IN-LBS TORQUE

THIS DOCUMENT WAS CREATED BY CAD.IT CANNOT BE MODIFIED EXCEPT BY CAD.

IND	MODIFICATIONS	DATE	VISA
C	ADDED FOR TIMES AA5888: SELECTOR 8 AND TURRET GREEN	10.31.91	LF
B	REDRAWN	7.15.91	LF

Creation	Date: 12.1.89	This information is given as an indication. In the continual goal to better our products, we reserve the right to bring any modifications judged necessary.		101, rue Philibert Hoffmann, Z.I. Quest 93116 ROSNY/BOIS Cedex (France) Tel.: (1) 49 35 35 35 Fax.: (1) 48 54 63 63 Télex: RADIA 235220
Up-date	Date: OCT.31.91			